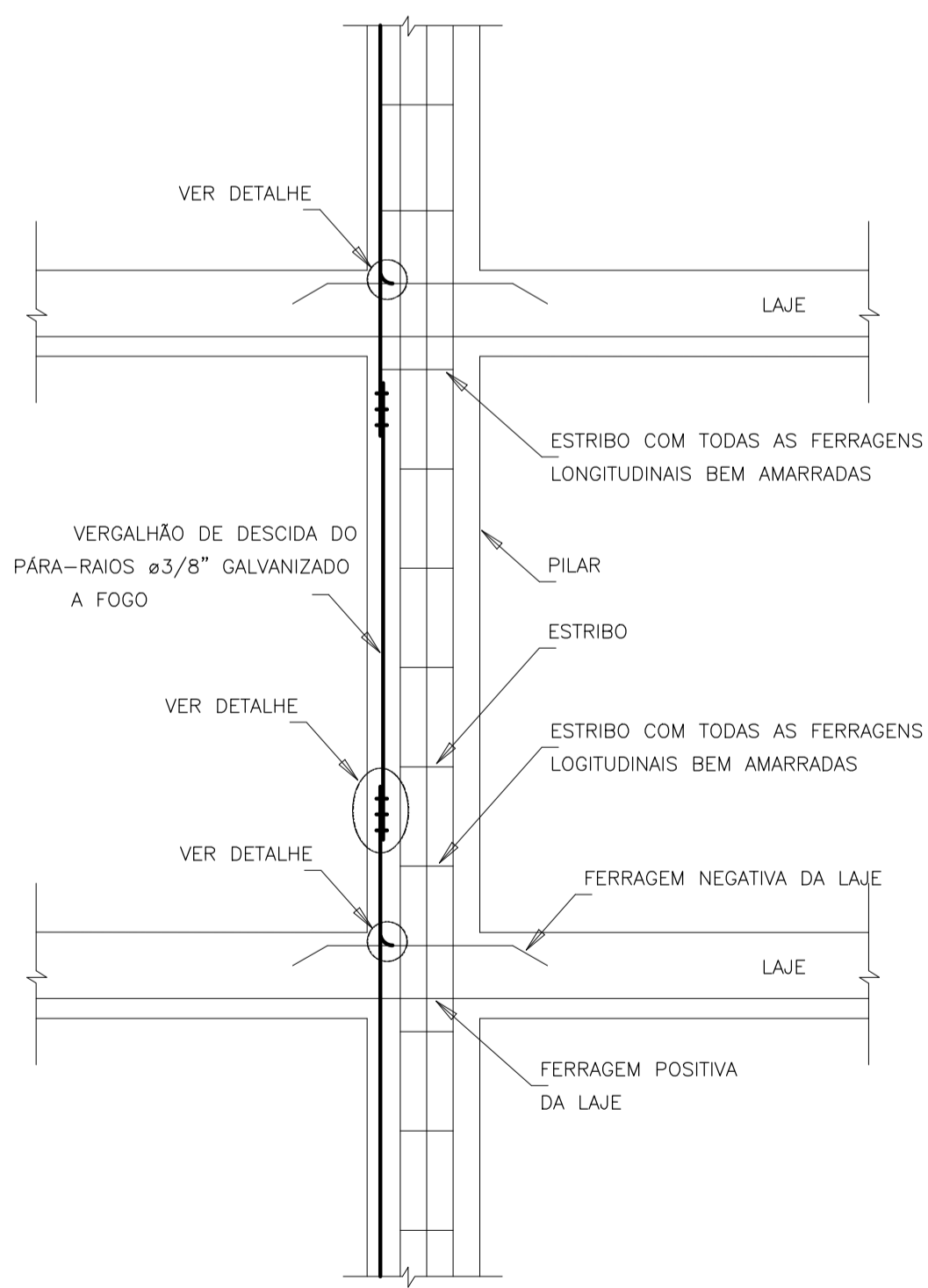
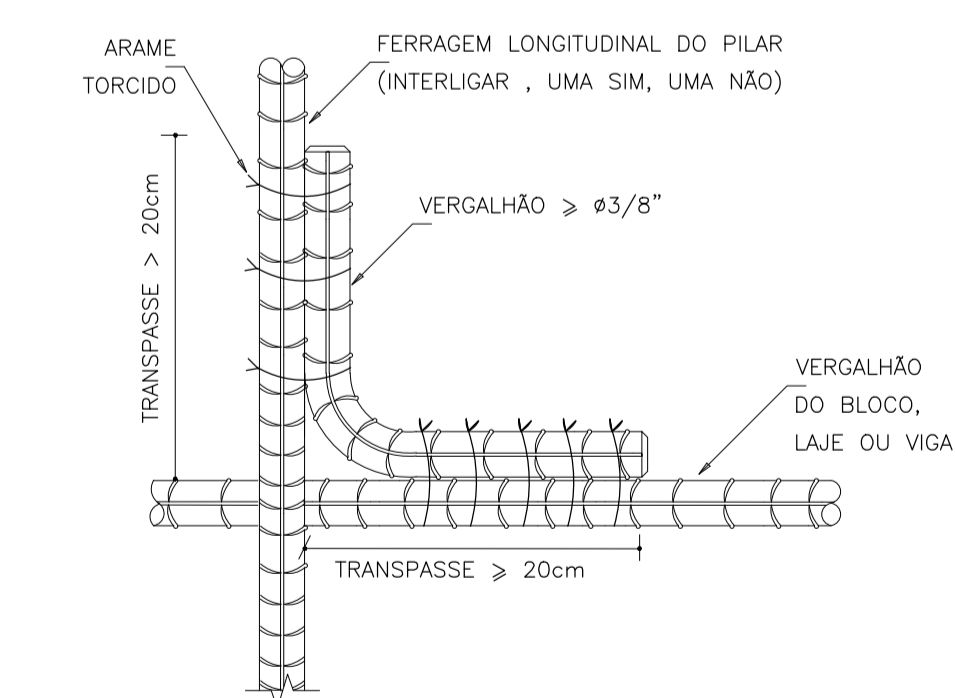
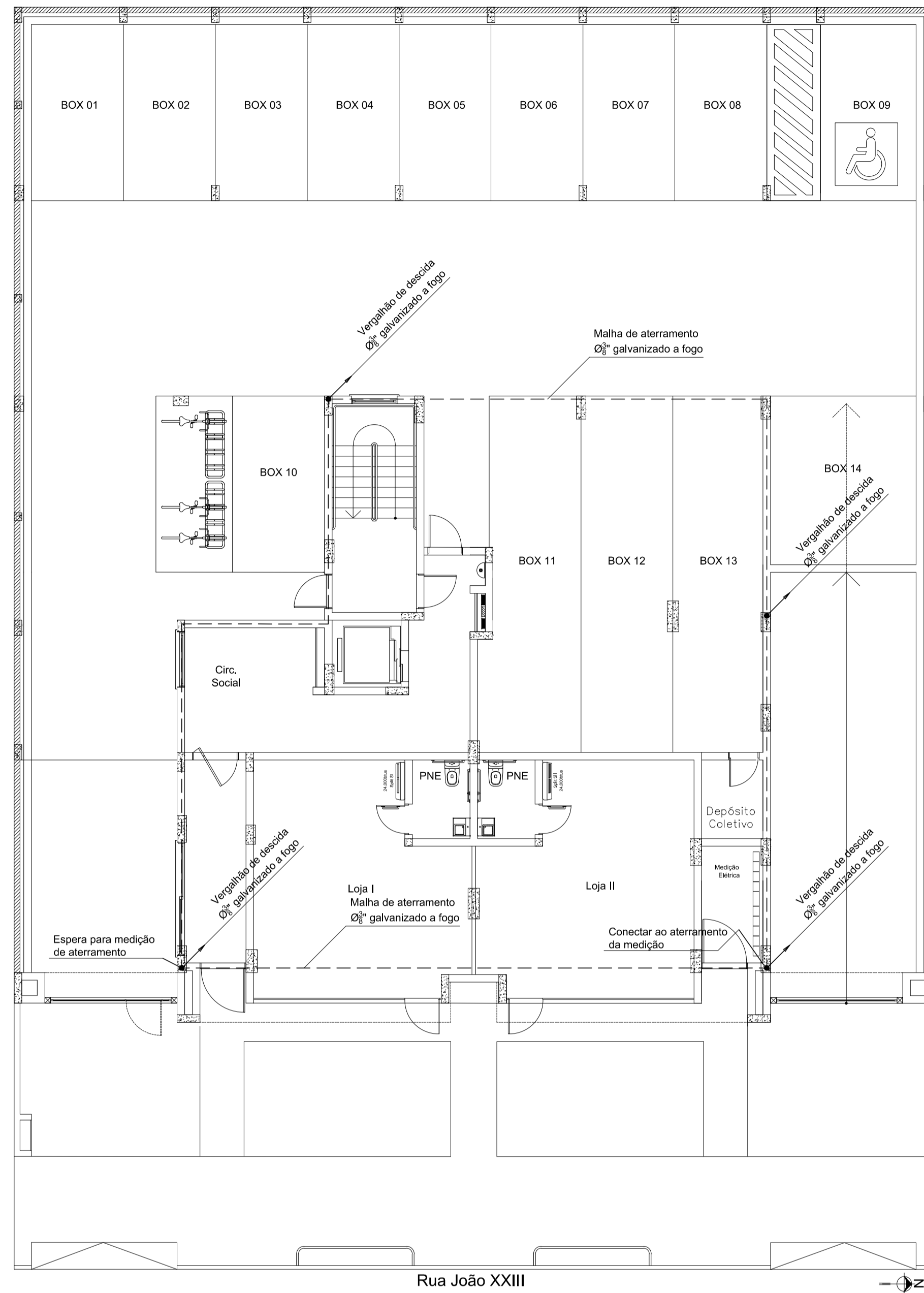


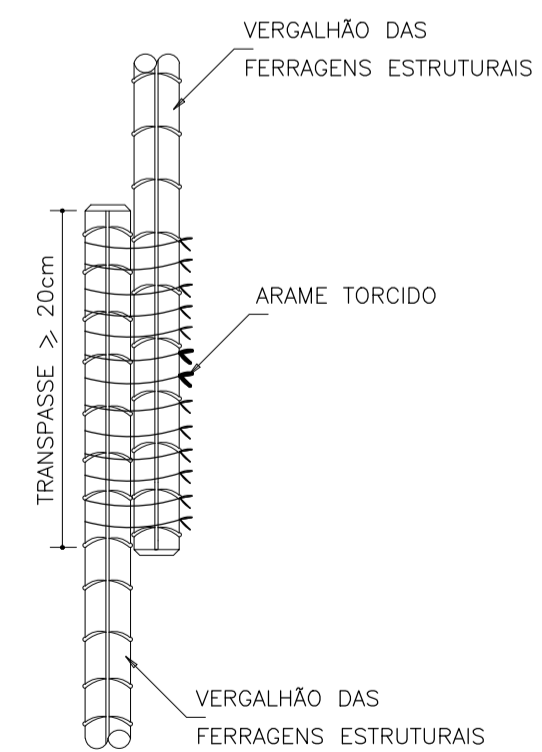
DETALHE GENÉRICO DO ATERRAMENTO



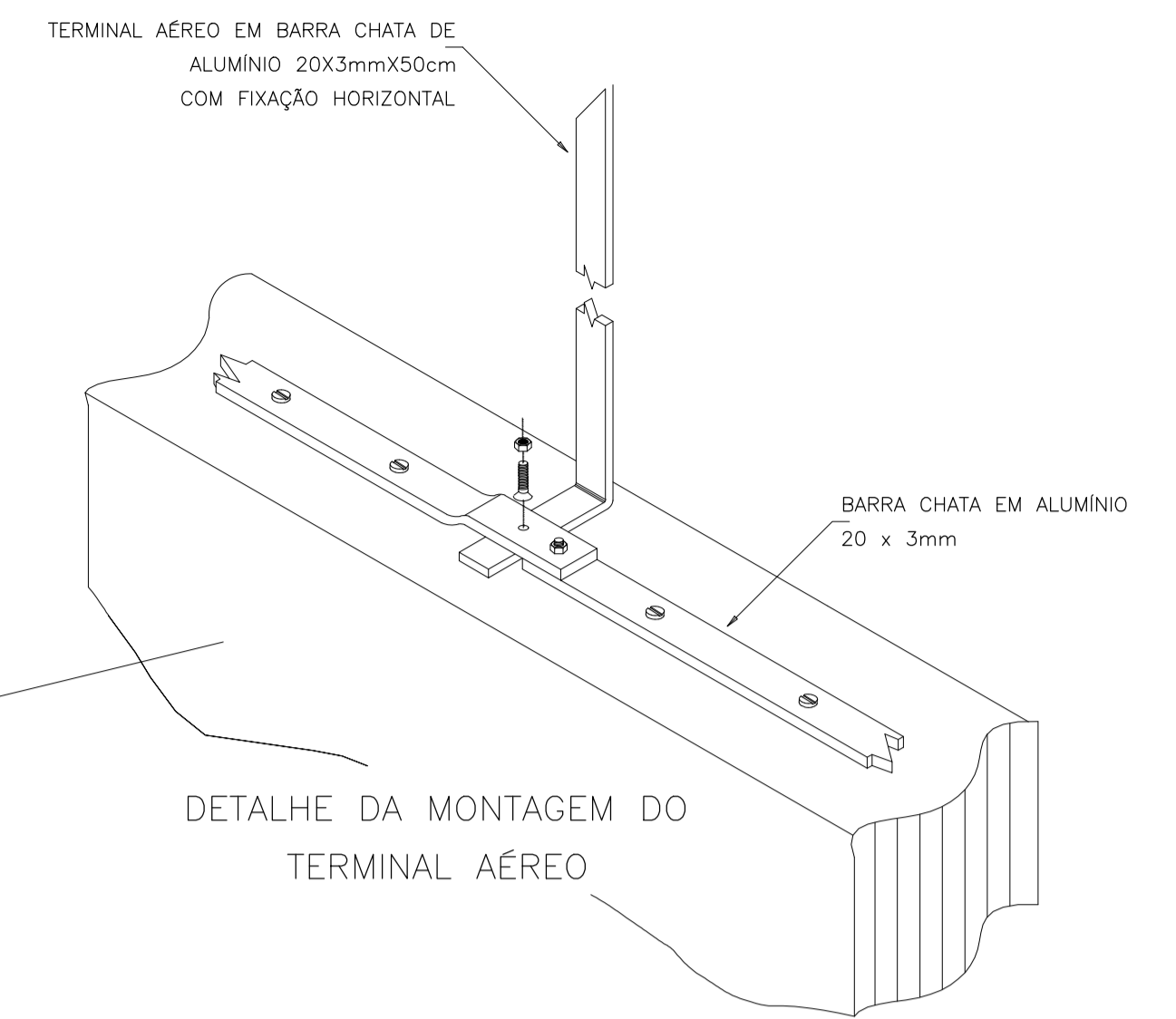
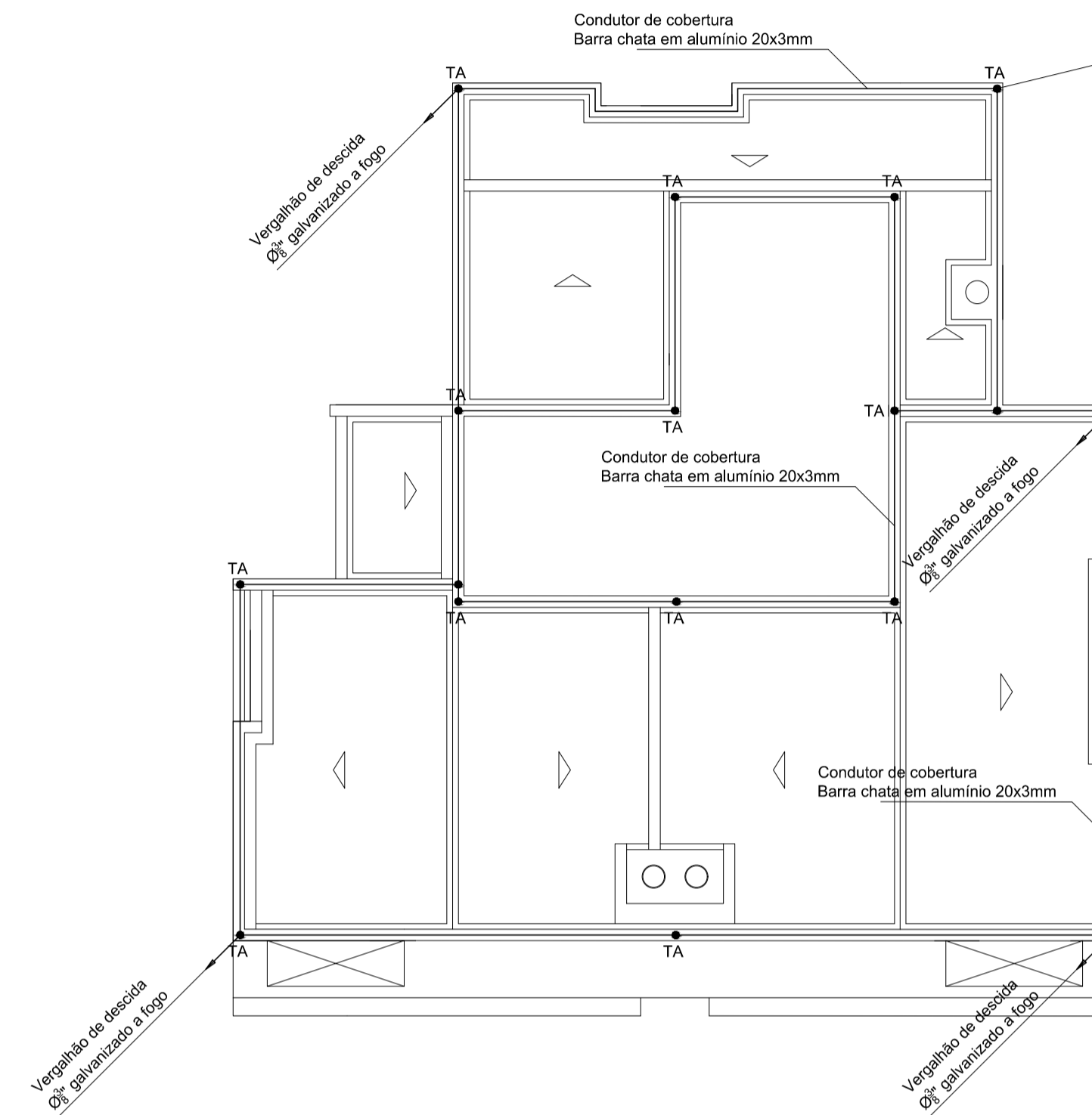
PÉ DIREITO GENÉRICO E AMARRAÇÕES



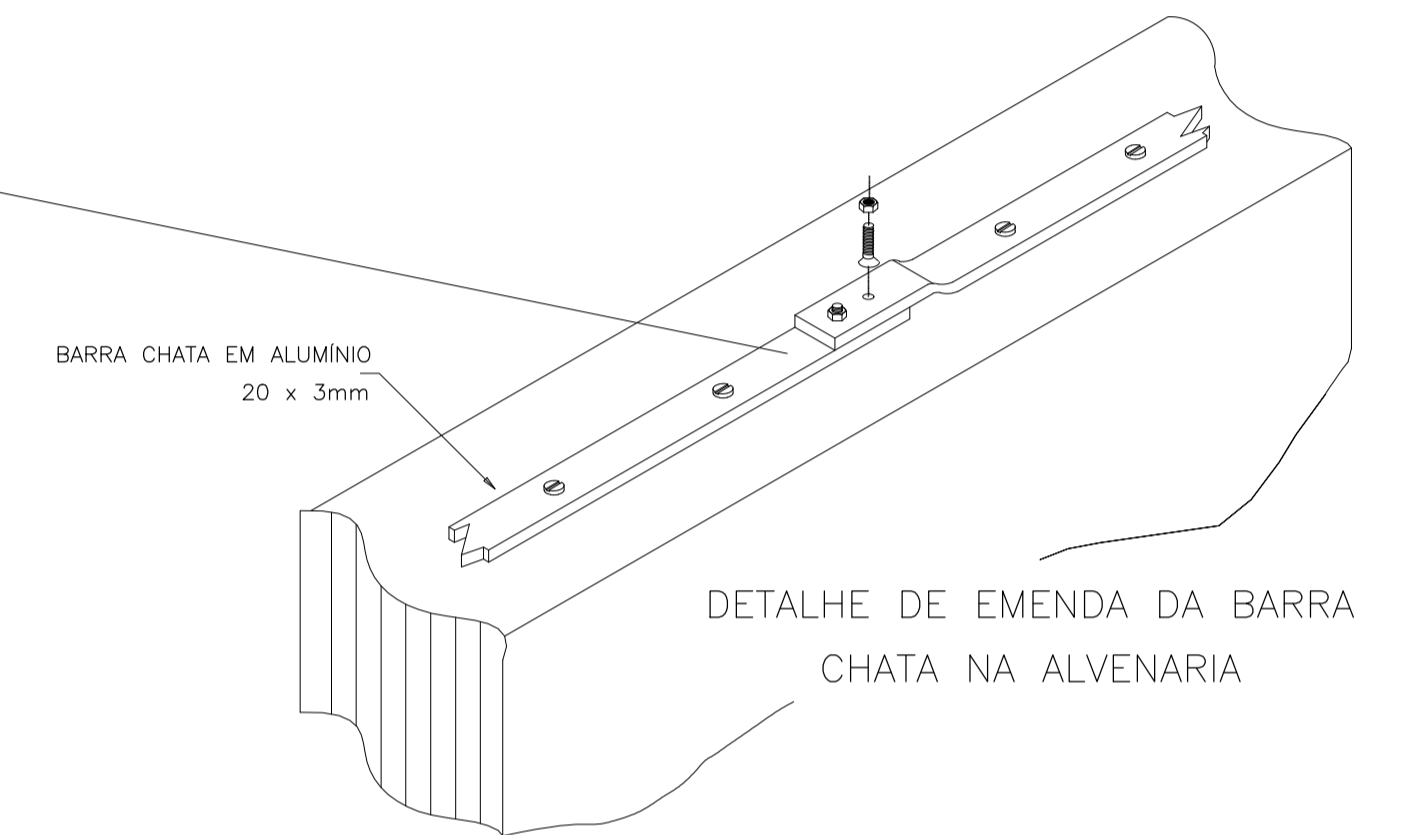
DETALHE DE AMARRAÇÃO DAS FERRAGENS DOS PILARES ESTRUTURAIS COM OS VERGALHÕES HORIZONTAIS



DETALHE DE EMENDA DO VERGALHÕES ESTRUTURAIS COM ARAME TORCIDO



DETALHE DA MONTAGEM DO TERMINAL AÉREO



SISTEMA DE PROTEÇÃO CONTRA DESCARGAS ATMOSFÉRICAS - SPDA

End: Rua João XXIII, lote 20, quadra 510, bairro São José, São Leopoldo/RS

Prop:

DG Arquitetura Integrada LTDA ME

Data: Outubro de 2019

Esc: 1:100



CLAUDIO GILBERTO ZABKA
Engº Eletricista CREA/RS 21894

DANTON LEDUR
Engº Eletricista CREA/RS 124485

Rua Itó, 72 - Scharlau - São Leopoldo - RS - CEP 93120-610
Fones: (51) 991696325 - (51) 993234671 zabkaledur@gmail.com

SPDA